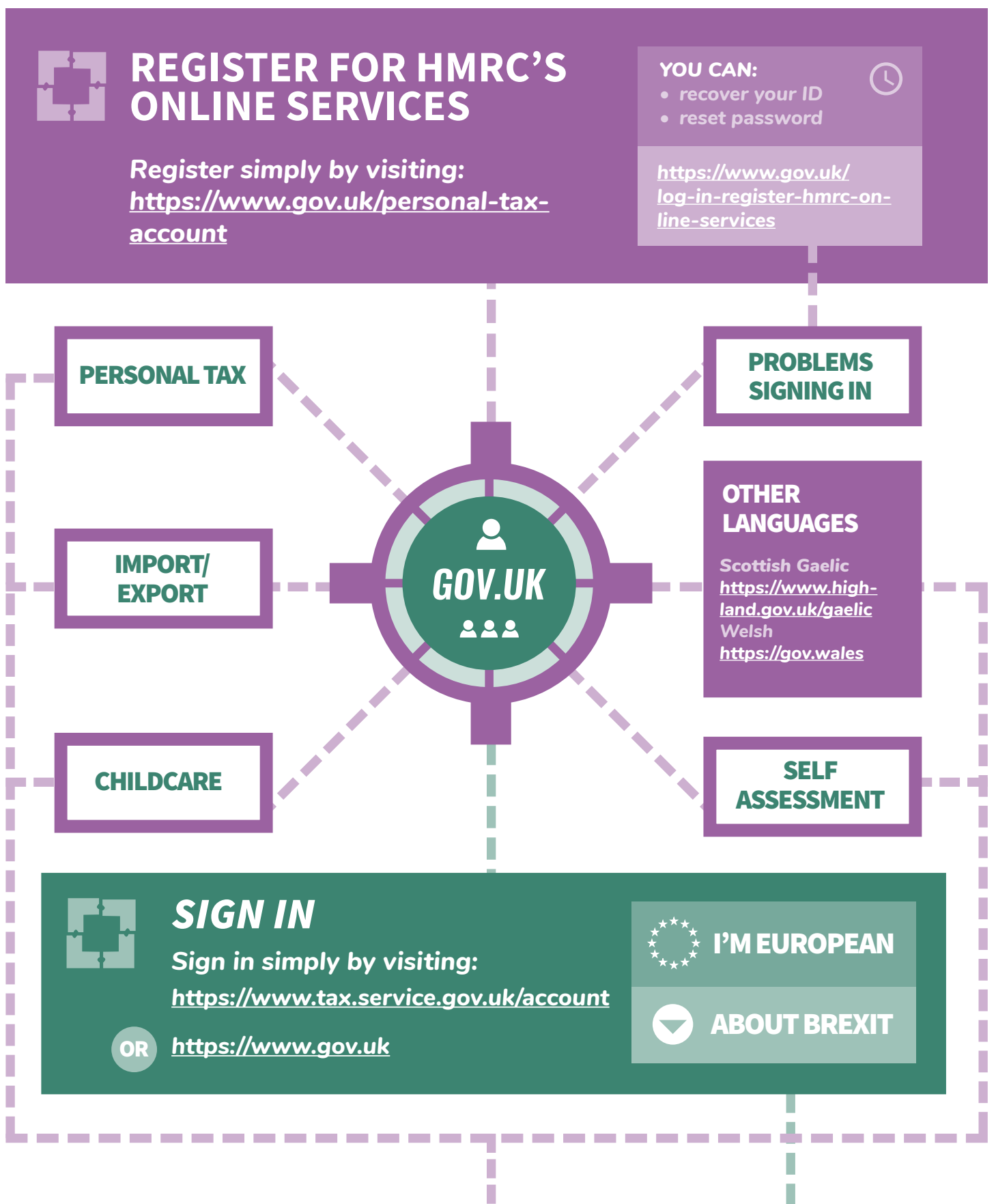




How to Login to HRMC: The Simple Guide

We show you how to login to gov.uk the fast way and find what you're looking for with our straightforward, easy-to-use infographic.



YOU WILL NEED TO PROVIDE IDENTITY TO CONTINUE

Sign in with GOV.UK Verify

You can now complete your task

GOV.UK VERIFY

CHAT

HMRC: European Union (EU) Help

<https://www.gov.uk/transition>

<https://www.gov.uk/guidance/employing-eu-eea-and-swiss-citizens-and-their-family-members-after-brexit>

MY DEVICE

wifi.service.gov.uk



BROUGHT TO YOU BY

STEEDMAN

ACCOUNTANTS • TAX CONSULTANTS



by
smujjy.com

SMUJY